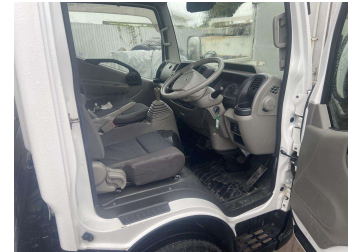


2013 Nissan Atlas insulated box




Purchase Price **\$25,845**

Includes GST, Registration & Licensing Note: A Clean Car fee/rebate does not apply to this vehicle


Indicative repayments

\$195.46 per week*

Based on a 156 week term & no deposit.
Total repayments (156) = \$30,491.54



Gain peace of mind with Mechanical Breakdown Insurance. Ask us how.



Top features

None Listed

Body Style
Truck - Box Body

Odometer
112,560 km

Engine
2950 cc

Fuel Type
Diesel

Transmission
5 Speed Manual

Wheels
-

VIN
7AT0DH1GX22042163

Interior
-

Safety
-



Reg No.

-

Ext Colour
White

History

-

Seats
3 seats

CO2 Emissions

-

Energy Economy

☆☆☆☆☆☆

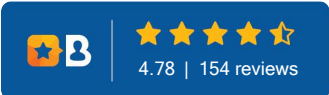
Annual fuel cost not available

Energy consumption unknown.

Stock ID: 1803



Kobe Commercial | Phone 06 833 7150 | Email sales@kobe.co.nz
20 Owen Street, Napier South, Napier 4110, New Zealand
www.kobe.co.nz



* Kobe Commercial is not a lender nor a financial adviser. Any amounts displayed should not be seen as an offer of finance or taken as financial advice. The interest rate, fees and loan term used in this calculation may not actually represent those available from lenders. Actual interest rates, fees and loan terms will vary per lender and are typically based on an assessment of your credit risk and responsible lending criteria. Any repayment amounts displayed are indicative only and have been calculated using several other indicative inputs. The interest rate used in this calculation is an arbitrary 9.95%, however exact interest rates vary per lender. The term of the loan used in this calculation is 156 week. Exact terms available vary per lender although options typically include 6, 12, 18, 24, 36, 48 and 60 months. This calculation also includes a typical mandatory fee charged by lenders. This is a one-off establishment fee of \$495.00. Typically, this fee can be paid upfront or, as in this calculation, be capitalised over the contract term, ie. included in the loan amount. This fee can vary per lender and other non-mandatory fees and charges may also apply. The total amount of repayments has been calculated by multiplying 156 weekly repayments (based on a 156 week term) by the weekly repayment amount of \$195.46 which equals \$30,491.54. This calculator does not consider any of your own personal circumstances and we strongly suggest you seek budgeting advice prior to committing to any loan contract. Responsible lending criteria and lender terms and conditions will likely apply to any finalised loan contract. Proof of security and/or vehicle insurance may also be required before proceeding.